

Monthly Weather Summary in Thailand February 2014

The weather condition was periodically dominated by the high pressure area from China which extended its ridge to cover upper Thailand and the South China Sea. Moreover, the prevailing of the northwesterly wind over upper Thailand during early month and the easterly and southeasterly winds blowing over Thailand for few days. These caused cool weather in the morning over Thailand, particularly in the upper northern where experienced cold weather mainly during the first half of the month while cold weather was present some rest areas. However, during late month, the influence of the heat low pressure cell covering upper Thailand resulted in increasing temperature and successive hot weather during daytime was pronounced. Mean temperature of February was slightly below normal of 0.2 °C. For rainfall, upper Thailand received isolated rainfall during mid-month with heavy rainfall in some areas along the eastern part while southern Thailand obtained less rainfall. Monthly rainfall was below normal in all parts of the country i.e. northern part 9.4 mm (90%), northeastern part 17.7 mm (96%), central part 10.0 mm (81%), eastern part 15.3 mm (53%), southern part (east coast) 28.6 mm (83%) and southern part (west coast) 26.5 mm (96%).

1 – 10 February: Under the influence of the ridge of high pressure areas from China extending to cover upper Thailand and the South China Sea coupled with the prevailing of the northwesterly wind over western and southern Thailand and the southeasterly wind over the central, eastern and southern parts. These caused generally cool weather in upper Thailand especially in the northern part that experienced cold weather in the upper portion. Cold weather also recorded in several areas of the northeastern part during early period and some places of southern Thailand along the east coast. The minimum temperature of the period was 8.4 °C at Umphang in Tak province on February 5 while that of the mountaintop was 2.5 °C at Doi Angkhang, Amphoe Fang in Chiang Mai province on February 4. During this period, there was unexpected rainfall in the eastern part during February 4-6 and in Bangkok Metropolis on February 8. The maximum daily rainfall of 9.1 mm was measured at Huai Pong Agrometeorological Station in Rayong province on February 6.

11 – 19 February: The another ridge of high pressure area extending to cover upper Thailand during late period accompanied with the easterly wind prevailing over Thailand, cool weather persisted in upper Thailand during the first half of the period after that temperature rose obviously especially in the central and eastern parts. The lowest minimum temperature was 10.6 °C at Umphang in Tak province on February 11 and the temperature in the area of mountaintop was 4.4 °C at Doi Inthanon, Chom Thong in Chiang Mai province on February 13. There was isolated rain with heavy rainfall in some areas of upper Thailand except for the eastern part obtained widely scattered to scattered rainfall with isolated heavy rainfall during mid and late period. The highest daily rainfall of 48.5 mm was recorded at Phliu Agrometeorological Station in Chanthaburi province on February 19. Cool weather continued in Southern Thailand with isolated rainfall along the east coast. The highest daily rainfall was 20.0 mm at Khuan Khanun in Phatthalung province on February 15.

20 – 28 February: Cool and cold weather continued in the northern part nearly the whole period whereas it remained in the northeastern, central and eastern parts during early period. The lowest minimum temperature was 10.9 °C at Mae Sariang in Mae Hong Son province on February 27 while that of the mountaintop was 5.0 °C at Doi Inthanon, Chom Thong in Chiang Mai province on February 21. Meanwhile, daytime temperature rose during the second half of the period, heat low pressure cell covering over upper Thailand caused the consecutive days of hot weather. The highest maximum temperature was 38.1 °C at Aranyaprathet in Sa Kaeo province on February 24. There was scattered rainfall in the eastern part with the maximum daily rainfall of 54.0 mm at Huai Pong Agrometeorological Station in Rayong province on February 20. For southern Thailand, cool weather still persisted and isolated rainfall was found during the first half of the period. The highest daily rainfall was 16.4 mm at Hua Hin in Prachuap Kiri Khan province on February 21.

Note : Rainfall, temperatures and natural disasters in this report was updated up to March 3, 2014.

Climatological Group
Meteorological Development Bureau
Meteorological Department

Monthly Current Report
Rainfall and Accumulative Rainfall
February 2014

Northern Thailand

| Station | Temperature (°c) | | Rainfall (mm) | | Accumulative rainfall (mm) Since 1 January | |
|----------------|-------------------|-----------------------------|---------------|-----------------------------|---|-----------------------------|
| | Mean | Above or below normal | Actual | Above or below normal | Actual | Above or below normal |
| Chiang Rai | 22.0 | 0.4 | 0.0 | -13.8 | 0.0 | -21.3 |
| Mae Hong Son | 22.4 | -0.2 | 0.0 | -6.0 | 0.0 | -12.4 |
| Phayao | 22.8 | 0.0 | 0.0 | -9.2 | 0.0 | -14.9 |
| Chiang Mai | 24.3 | 0.4 | 0.0 | -8.9 | 0.0 | -13.1 |
| Tha Wang Pha | 22.9 | 0.4 | 2.2 | -6.8 | 2.2 | -13.8 |
| Nan | 24.1 | 0.5 | 5.2 | -6.7 | 5.2 | -11.1 |
| Lamphun | 23.6 | -0.7 | 0.0 | -4.9 | 0.0 | -7.7 |
| Lampang | 24.7 | 0.0 | 0.0 | -8.8 | 0.0 | -11.6 |
| Mae Sariang | 21.9 | -0.3 | 0.0 | -6.5 | 0.0 | -8.0 |
| Phrae | 24.3 | -0.3 | 1.5 | -7.3 | 1.5 | -13.1 |
| Uttaradit | 25.9 | -0.2 | 5.3 | -9.2 | 5.3 | -14.7 |
| Bhumibol Dam | 26.8 | 0.1 | 0.0 | -6.9 | 0.0 | -9.5 |
| Tak | 27.2 | -0.1 | 0.0 | -8.7 | 0.0 | -10.8 |
| Mae Sot | 24.7 | 0.2 | 0.2 | -8.0 | 0.2 | -9.7 |
| Umphang | 22.3 | 0.7 | 0.5 | -8.6 | 0.5 | -15.4 |
| Phitsanulok | 26.3 | -0.7 | 0.5 | -13.0 | 0.5 | -16.9 |
| Lom Sak | 26.1 | 0.2 | 0.0 | -17.1 | 0.0 | -21.9 |
| Phetchabun | 26.7 | 0.2 | 0.0 | -16.1 | 0.0 | -21.7 |
| Wichian Buri | 27.4 | -0.1 | 0.0 | -12.6 | 0.0 | -20.3 |
| Kamphaeng Phet | 26.8 | 0.0 | 3.8 | -9.3 | 3.8 | -11.6 |
| Over the area | 24.7 | 0.1 | 1.0 | -9.4 -90% | 1.0 | -14.0 -93% |

Northeastern Thailand

| Station | Temperature (°c) | | Rainfall (mm) | | Accumulative rainfall (mm) Since 1 January | |
|-------------------|-------------------|-----------------------------|---------------|-----------------------------|---|-----------------------------|
| | Mean | Above or below normal | Actual | Above or below normal | Actual | Above or below normal |
| Nong Khai | 25.6 | 0.7 | 0.0 | -17.3 | 0.0 | -25.6 |
| Loei | 25.0 | 0.8 | 0.2 | -15.9 | 0.2 | -22.1 |
| Udon Thani | 25.4 | 0.1 | 0.0 | -22.0 | 0.0 | -28.3 |
| Nakhon Phanom | 24.5 | 0.1 | 5.8 | -25.2 | 5.8 | -28.2 |
| Sakon Nakhon | 24.5 | 0.1 | 0.0 | -29.3 | 0.0 | -34.0 |
| Mukdahan | 24.9 | 0.0 | 0.4 | -17.0 | 0.4 | -20.7 |
| Khon Kaen | 26.1 | 0.2 | 0.0 | -21.4 | 0.0 | -25.4 |
| Kosum Phisai | 26.2 | 0.4 | 0.0 | -15.0 | 0.0 | -18.5 |
| Roi Et | 25.8 | 0.1 | 0.5 | -18.7 | 0.5 | -22.3 |
| Chaiyaphum | 26.8 | 0.1 | 0.0 | -14.3 | 0.0 | -18.8 |
| Ubon Ratchathani | 25.7 | -0.8 | 0.0 | -15.4 | 0.0 | -17.4 |
| Tha Tum | 25.6 | -0.6 | 0.1 | -16.0 | 0.1 | -21.1 |
| Surin | 26.1 | -0.5 | 0.0 | -11.5 | 0.0 | -17.1 |
| Nakhon Ratchasima | 26.8 | -0.1 | 2.7 | -13.4 | 2.7 | -21.6 |
| Chok Chai | 26.6 | 0.1 | 0.2 | -14.6 | 0.2 | -18.6 |
| Nang Rong | 25.8 | -0.6 | 3.4 | -16.2 | 3.4 | -20.9 |
| Over the area | 25.7 | 0.0 | 0.8 | -17.7 -96% | 0.8 | -22.5 -97% |

- NOTES :
- 1) Mean temperature is the average of daily dry-bulb temperature
 - 2) "T" is trace, rainfall amount less than 0.1 mm.
 - 3) "blank" is incomplete data.
 - 4) Temperature and rainfall are preliminary data.

Monthly Current Report
Rainfall and Accumulative Rainfall
February 2014

Central Thailand

| Station | Temperature (°c) | | Rainfall (mm) | | Accumulative rainfall (mm) Since 1 January | |
|--------------------|-------------------|-----------------------------|---------------|-----------------------------|---|-----------------------------|
| | Mean | Above or below normal | Actual | Above or below normal | Actual | Above or below normal |
| Nakhon Sawan | 28.2 | 0.1 | 0.0 | -11.9 | 0.0 | -16.2 |
| Bua Chum | 27.3 | -0.1 | 0.0 | -9.1 | 0.0 | -15.8 |
| Lop Buri | 27.5 | -0.6 | 5.0 | -1.9 | 5.0 | -7.6 |
| Suphan Buri | 27.2 | -0.2 | 0.0 | -6.9 | 0.0 | -10.6 |
| Thong Pha Phum | 26.9 | 0.1 | 0.0 | -16.4 | 0.0 | -21.8 |
| Kanchanaburi | 27.9 | -0.1 | 2.5 | -15.7 | 2.5 | -19.0 |
| Bangkok Airport | 27.6 | -0.7 | 8.4 | -0.6 | 8.4 | -12.0 |
| Bangkok Metropolis | 27.8 | -0.5 | 2.1 | -17.9 | 2.1 | -31.2 |
| Over the area | 27.6 | -0.2 | 2.3 | -10.0 -81% | 2.3 | -16.7 -88% |

Eastern Thailand

| Station | Temperature (°c) | | Rainfall (mm) | | Accumulative rainfall (mm) Since 1 January | |
|---------------|-------------------|-----------------------------|---------------|-----------------------------|---|-----------------------------|
| | Mean | Above or below normal | Actual | Above or below normal | Actual | Above or below normal |
| Prachin Buri | 27.8 | -0.4 | 0.0 | -15.8 | 0.0 | -23.5 |
| Kabin Buri | 26.8 | -1.0 | 3.3 | -21.6 | 3.3 | -30.6 |
| Aranyaprathet | 27.9 | -0.3 | 1.0 | -26.6 | 1.0 | -32.0 |
| Chon Buri | 27.6 | -0.4 | 5.6 | -8.7 | 5.6 | -18.6 |
| Ko Sichang | 26.6 | -1.0 | 1.4 | -14.3 | 1.4 | -25.2 |
| Pattaya | 26.3 | -1.0 | 10.4 | -3.9 | 10.4 | -19.5 |
| Sattahip | 26.5 | -1.0 | 29.7 | 10.3 | 29.7 | -15.3 |
| Rayong | 26.9 | -1.0 | 12.8 | -23.7 | 12.8 | -44.4 |
| Chanthaburi | 26.3 | -1.0 | 40.2 | 3.8 | 40.2 | -14.9 |
| Khlong Yai | 26.8 | -0.4 | 33.2 | -52.8 | 33.2 | -90.0 |
| Over the area | 27.0 | -0.7 | 13.8 | -15.3 -53% | 13.8 | -31.4 -69% |

- NOTES :
- 1) Mean temperature is the average of daily dry-bulb temperature
 - 2) "T" is trace, rainfall amount less than 0.1 mm.
 - 3) "blank" is incomplete data.
 - 4) Temperature and rainfall are preliminary data.

Monthly Current Report
Rainfall and Accumulative Rainfall
February 2014

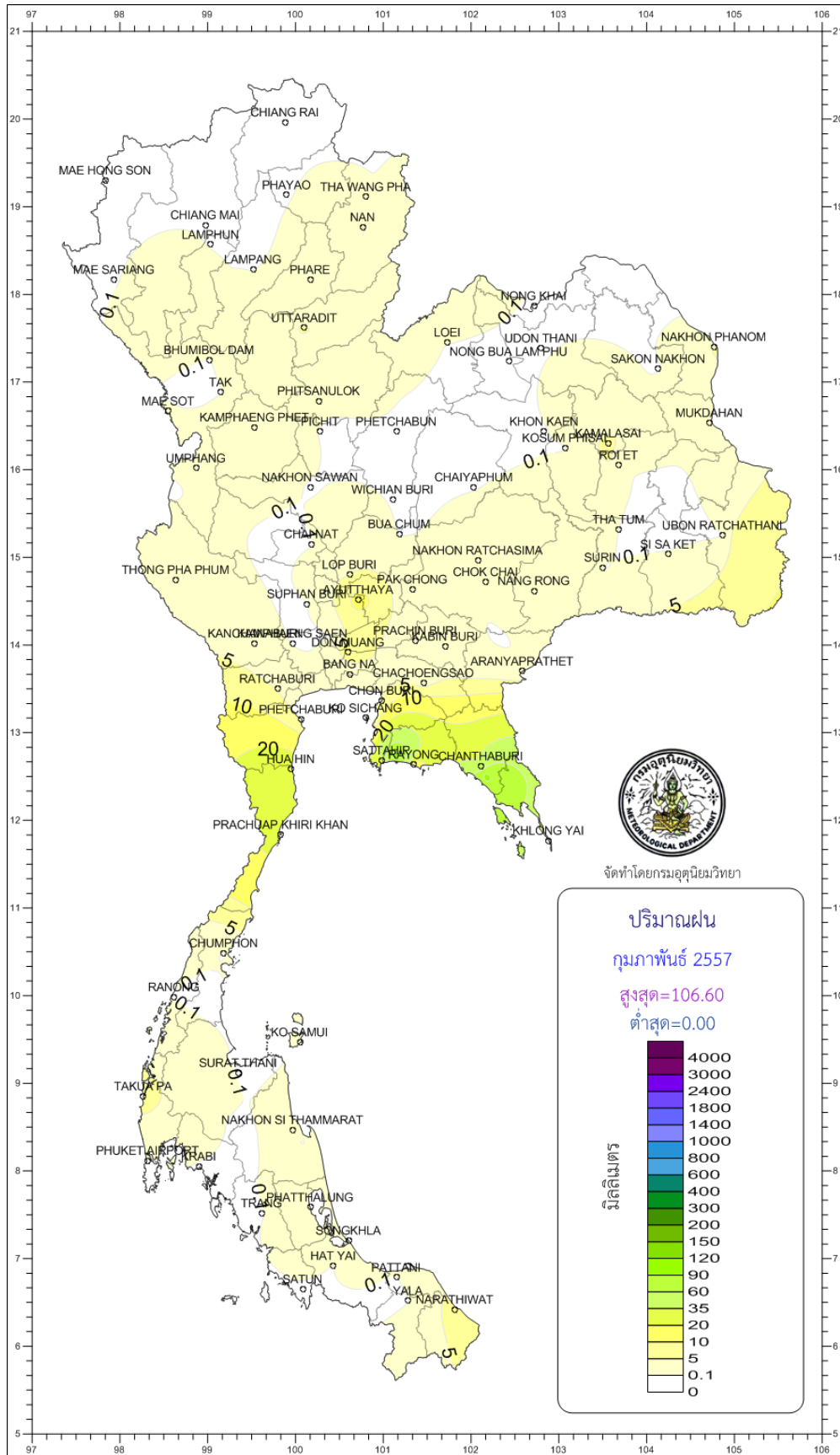
Southern Thailand, east coast

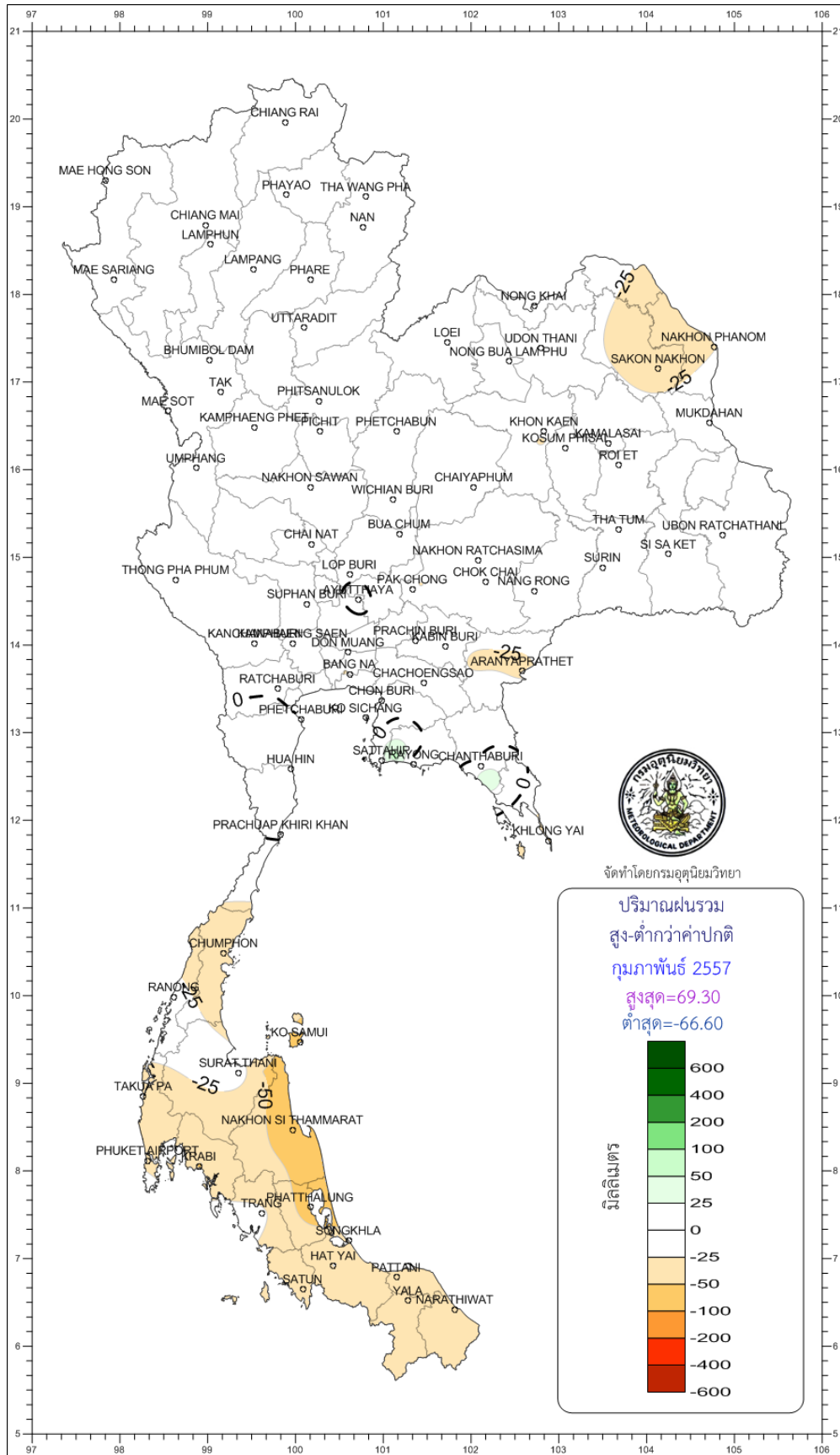
| Station | Temperature (°c) | | Rainfall (mm) | | Accumulative rainfall (mm) Since 1 January | |
|---------------------|-------------------|-----------------------------|---------------|-----------------------------|---|-----------------------------|
| | Mean | Above or below normal | Actual | Above or below normal | Actual | Above or below normal |
| Phetchaburi | 26.7 | -0.5 | 4.3 | 0.4 | 4.3 | -11.0 |
| Hua Hin | 26.4 | -0.8 | 28.5 | 13.2 | 28.5 | 1.4 |
| Prachuap Khiri Khan | 26.3 | -0.3 | 23.7 | 1.9 | 23.7 | -22.5 |
| Chumphon | 26.4 | -0.3 | 0.0 | -44.7 | 3.9 | -100.2 |
| Surat Thani | 26.2 | -0.2 | 0.0 | -12.3 | 28.6 | -20.5 |
| Ko Samui | 26.8 | -0.6 | 0.3 | -54.1 | 15.4 | -125.2 |
| Nakhon Si Thammarat | 25.7 | -0.8 | 1.6 | -66.6 | 269.1 | 55.5 |
| Songkhla | 26.9 | -0.6 | 0.0 | -48.6 | 9.7 | -113.7 |
| Hat Yai Airport | 26.1 | -0.6 | 0.0 | -24.4 | 7.4 | -70.8 |
| Pattani Airport | 26.1 | -0.4 | 0.0 | -32.0 | 16.4 | -66.5 |
| Narathiwat | 26.0 | -0.6 | 7.0 | -46.7 | 80.8 | -74.5 |
| Over the area | 26.3 | -0.5 | 5.9 | -28.6 -83% | 44.3 | -49.9 -53% |

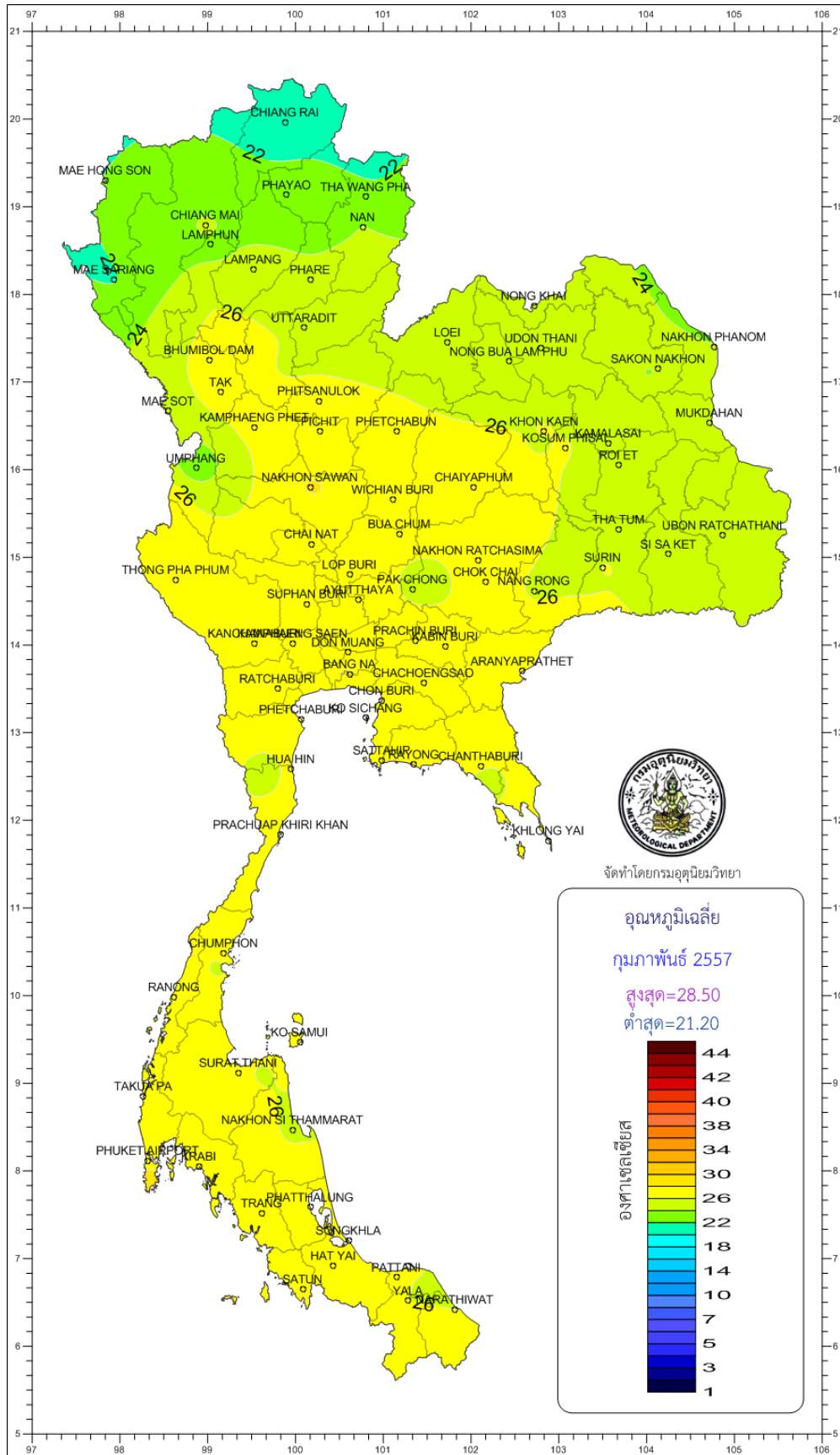
Southern Thailand, west coast

| Station | Temperature (°c) | | Rainfall (mm) | | Accumulative rainfall (mm) Since 1 January | |
|----------------|-------------------|-----------------------------|---------------|-----------------------------|---|-----------------------------|
| | Mean | Above or below normal | Actual | Above or below normal | Actual | Above or below normal |
| Ranong | 27.2 | -0.3 | 0.0 | -16.0 | 0.0 | -26.0 |
| Takua Pa | 27.0 | 0.0 | 7.1 | -34.0 | 13.8 | -66.7 |
| Phuket | 28.5 | -0.2 | 0.0 | -23.9 | 16.0 | -38.2 |
| Phuket Airport | 27.6 | -0.1 | 0.0 | -27.2 | 88.4 | 25.0 |
| Ko Lanta | 27.6 | -0.6 | 0.0 | -18.0 | 0.6 | -32.3 |
| Trang Airport | 27.2 | -0.3 | 0.0 | -20.8 | 25.8 | -27.5 |
| Satun | 27.9 | -0.2 | 0.0 | -45.8 | 46.0 | -21.0 |
| Over the area | 27.6 | -0.2 | 1.0 | -26.5 -96% | 27.2 | -26.7 -50% |

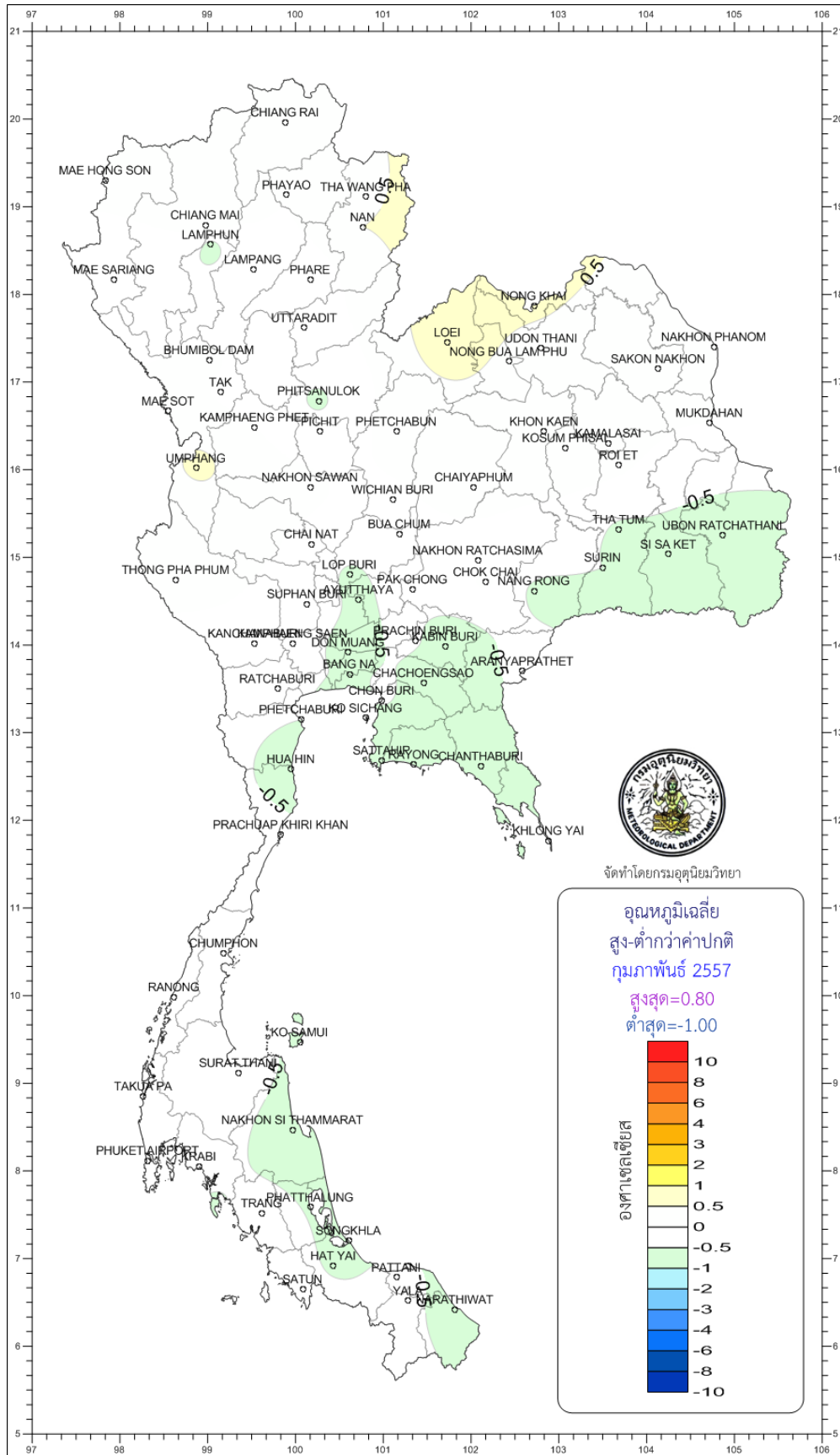
- NOTES :
- 1) Mean temperature is the average of daily dry-bulb temperature
 - 2) "T" is trace, rainfall amount less than 0.1 mm.
 - 3) "blank" is incomplete data.
 - 4) Temperature and rainfall are preliminary data.

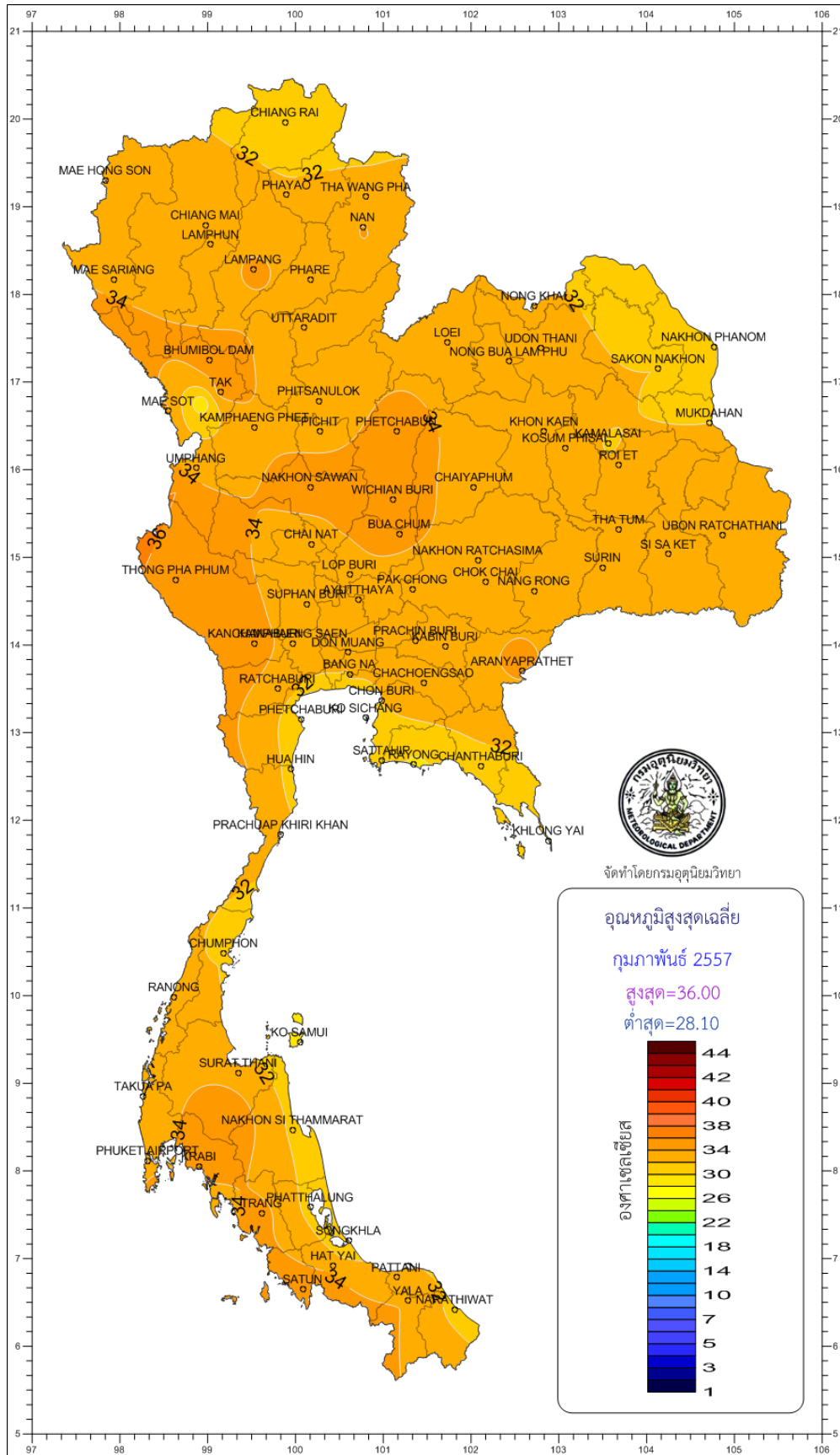




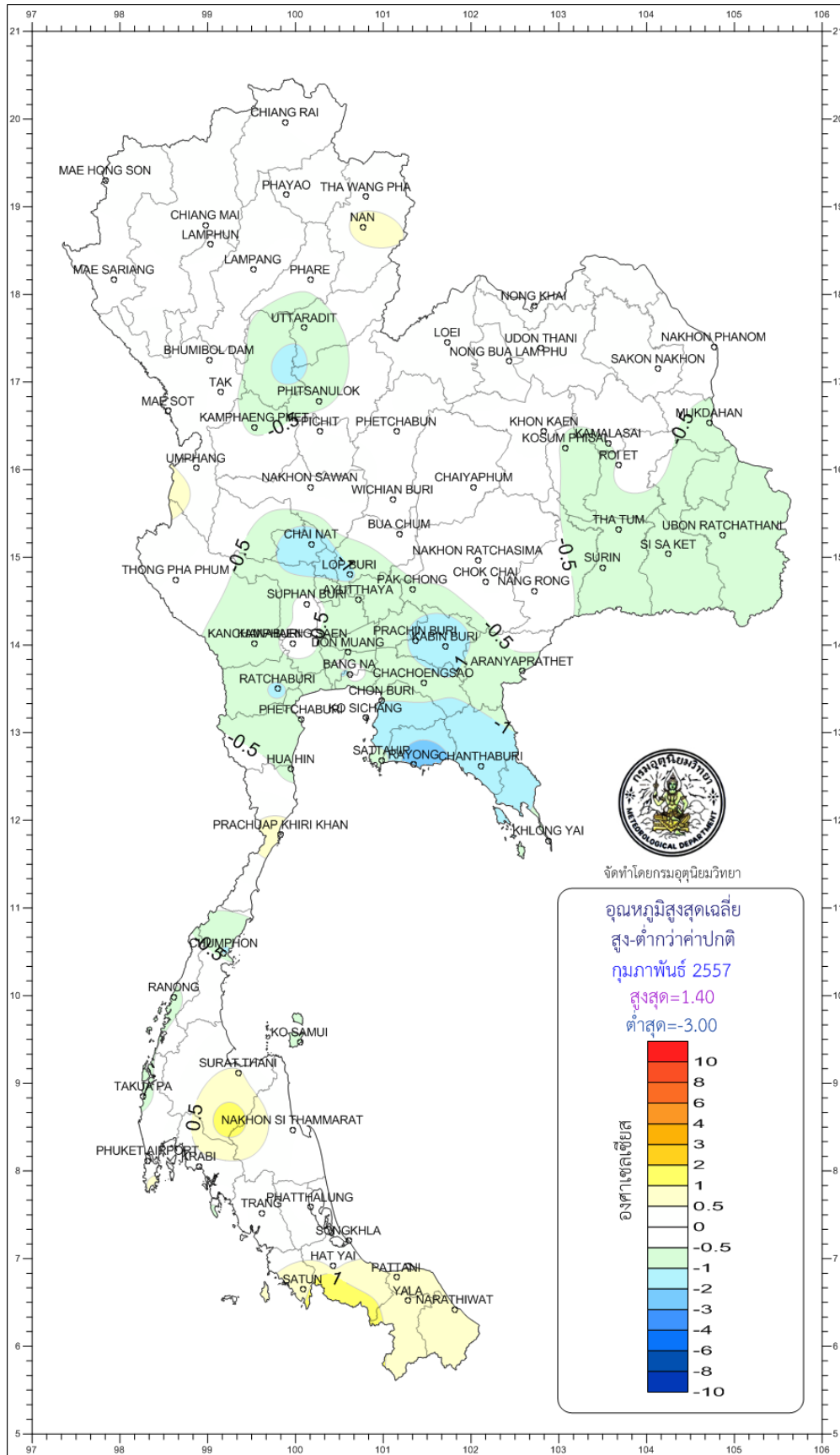


จัดทำโดยกรมอุตุนิยมวิทยา

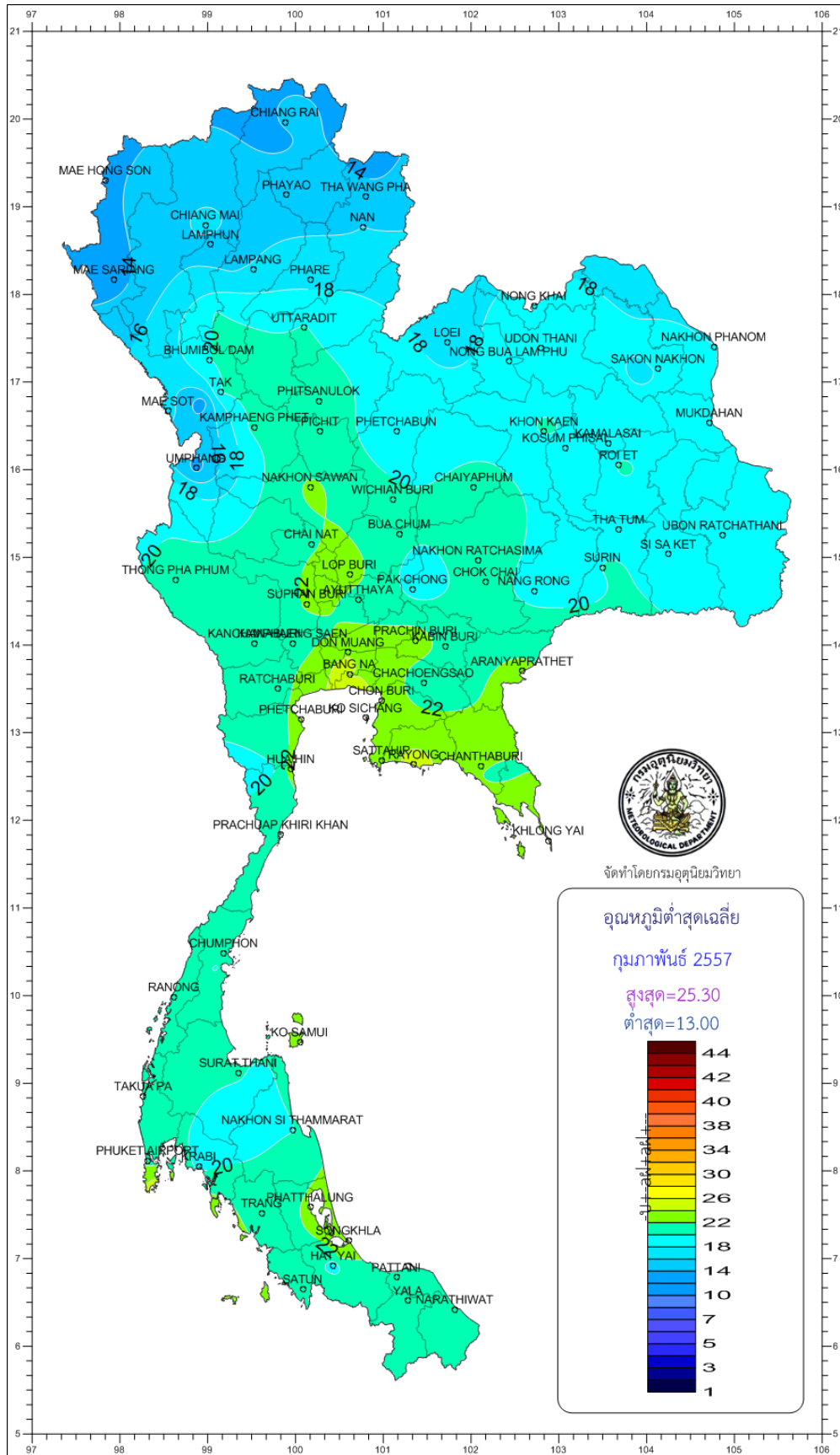


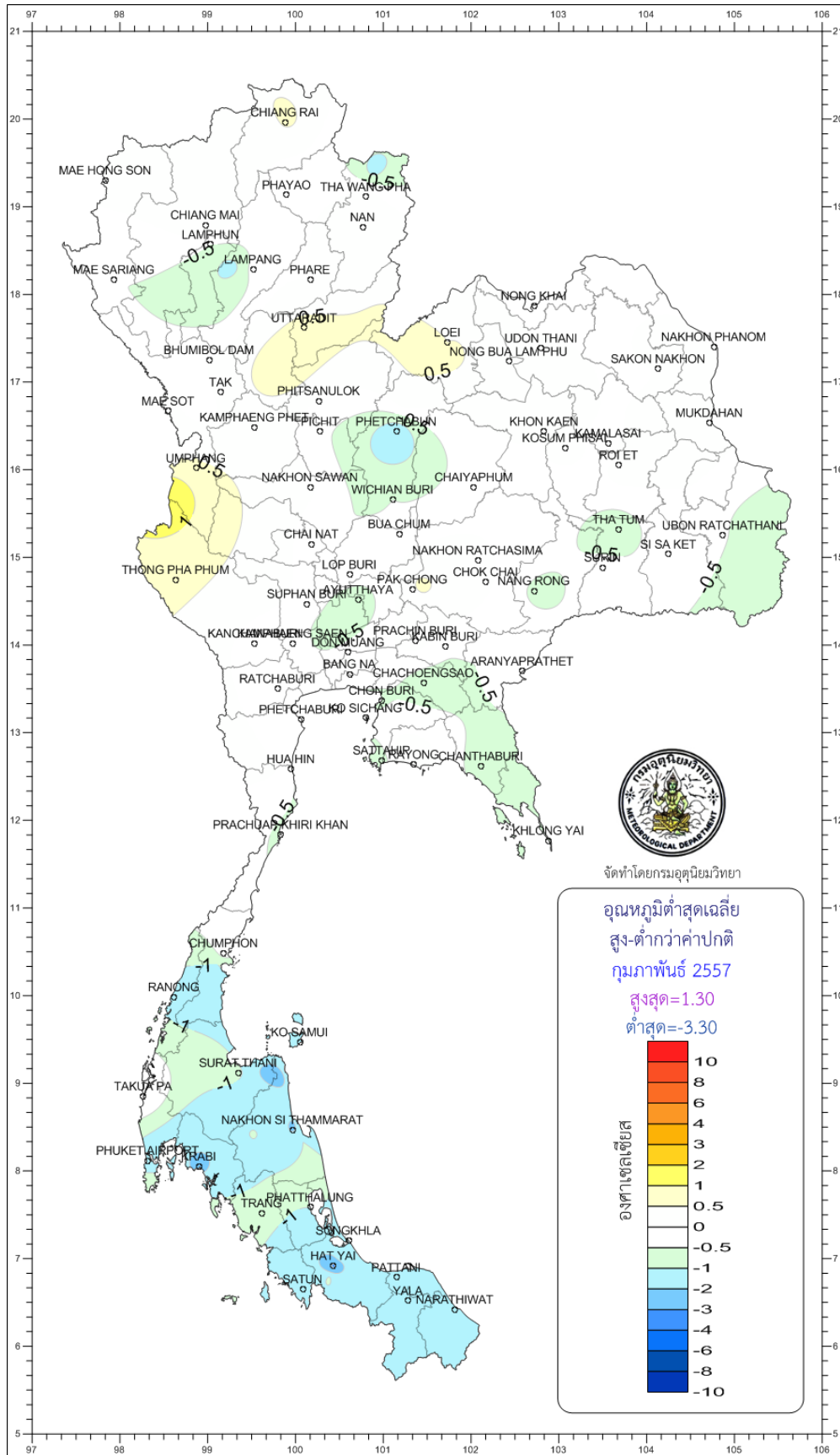


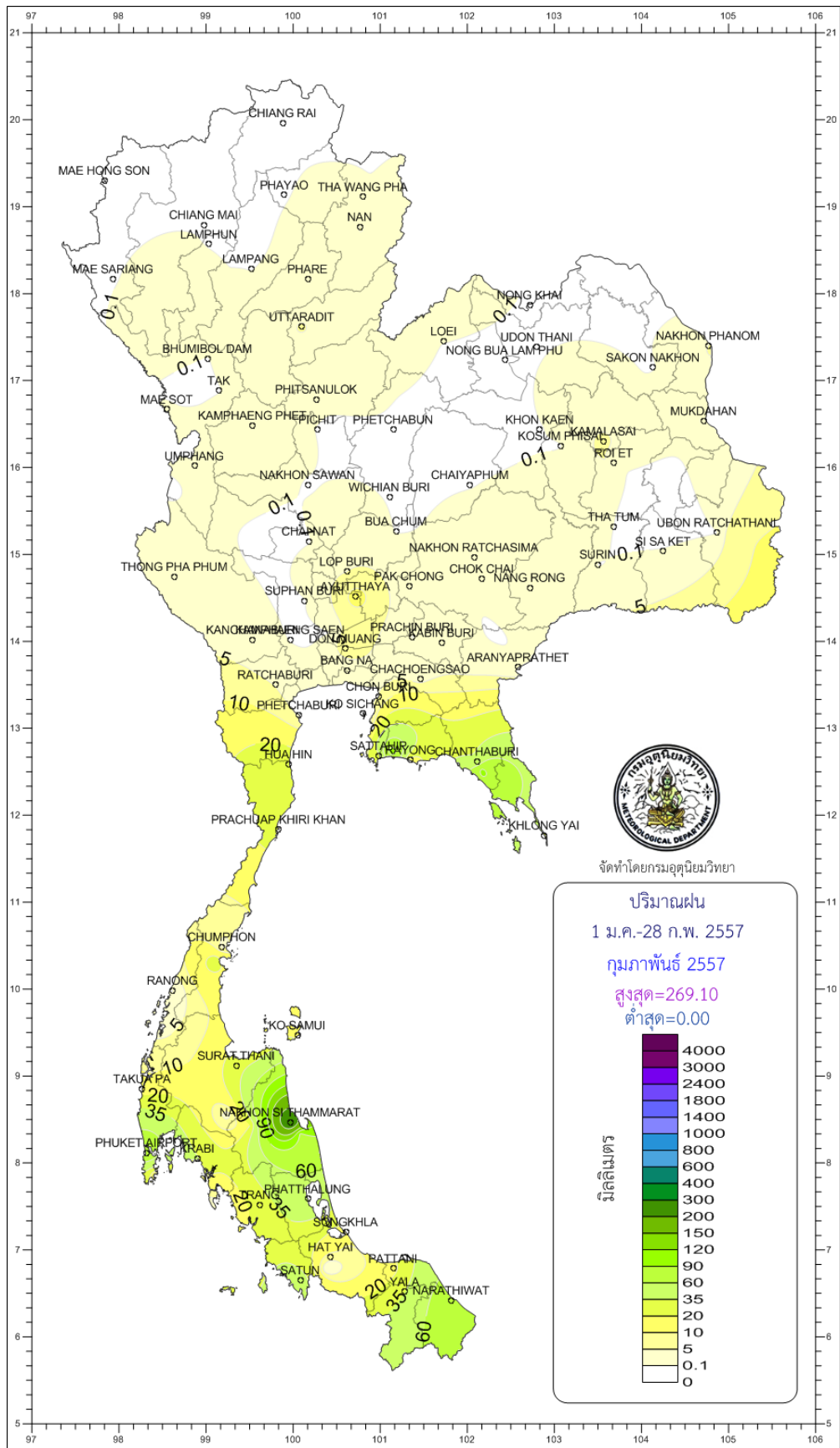
จัดทำโดยกรมอุตุนิยมวิทยา



จัดทำโดยกรมอุตุนิยมวิทยา







จัดทำโดยกรมอุตุนิยมวิทยา

ปริมาณฝน
1 ม.ค.-28 ก.พ. 2557
กุมภาพันธ์ 2557
สูงสุด=269.10
ต่ำสุด=0.00

